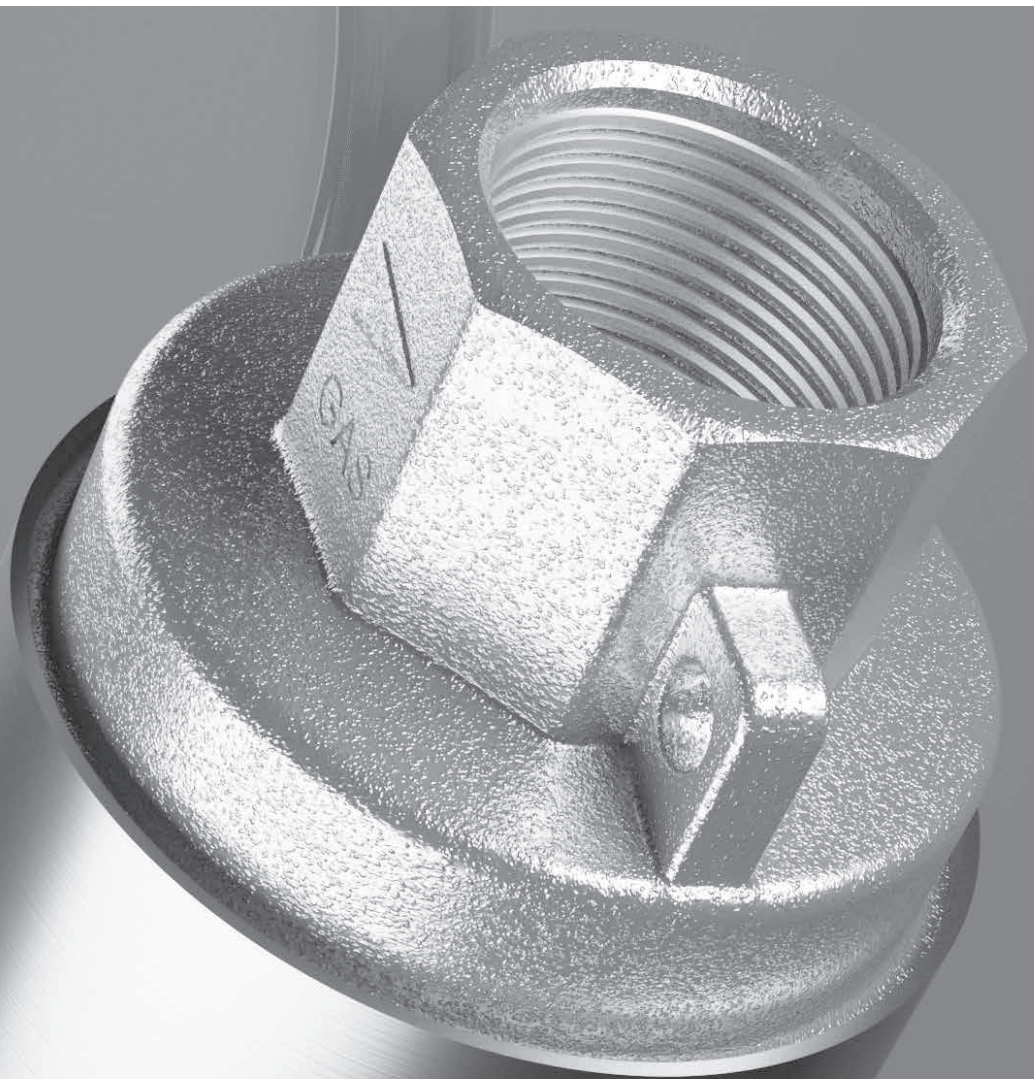


# S4

4" SUBMERSIBLE ELECTRIC PUMPS





**TECNICAL DATA**

**Operating range :**

Up to 21,6 m<sup>3</sup>/h with head up to 427 metres

**Type of pumped liquid :** Clean, free of solids and abrasive substances, non-viscous, non-aggressive, non-crystallized and chemically neutral

**Pump maximum diameter:** 99 mm

**Maximum amount of sand:** 150 g/m<sup>3</sup>

**Delivery port diameter:**

S4-1, S4-2, S4-3, S4-4, S4-6: 1" 1/4

S4-8, S4-12, S4-16: 2"

**Impellers material:** Technopolymer

**Liquid temperature range:** From 0°C to + 40°C

**Maximum immersion depth:** 4GG: 300 m - 40L: 250 m

**Maximum number of starts:** 20/h

**Motor protection class:** IP 68

**Motor insulation class:** F

**Single phase power input:** 1x230 V 50 Hz

**Three phase power input:** 3x230 V 50 Hz - 3x400 V 50 Hz

**Possible type of installation:** Fixed in vertical position. Horizontal installation is possible, it is recommended to install a cooling sleeve

**Special versions on request:** Different voltages, different cable lengths, version with 4GX or 4TW motor

**Certification:**

ACS certificate. WRAS and DM174 certificate are pending approval



PUMP BODY AND WATER FILLED MOTOR



PUMP BODY

**DM 174**

PUMP BODY AND MOTOR

**APPLICATION**

S4 are multi-impeller borehole pumps with a water-filled or oil-filled DAB motor capable of providing a wide range of hydraulic performances, designed for water boosting, drawing water from subsoil, gardening and irrigation in civil and commercial applications and for the movement of water in agriculture.

**CONSTRUCTION FEATURES OF THE PUMP**

Technopolymer impellers housed in the stage box with stainless steel adjustment rings. Pump liner, shaft, coupling with motor, integrated suction filter and stainless steel cable cover. Suction and delivery supports in micro-cast AISI 304 stainless steel. Removable built-in non-return valve in technopolymer or with stainless steel plate (depending on model). Technopolymer impellers designed to ensure high levels of efficiency in accordance with Directive 2009/125/EC (Eco design - ErP) with MEI index  $\geq 0.4$  for the whole range. They have the ACS certificate, WRAS and DM174 certificate are pending approval.

**CONSTRUCTION FEATURES OF THE MOTOR**

Pump body can be coupled to 4GG and 40L motors (4TW or 4GX on request).

**4GG** is a two-pole asynchronous motor with the parts in contact with water made of AISI 304 stainless steel. The thrust block and bushes are cooled and lubricated with a mixture of water and glycol. Rotor mounted on a Kingsbury type self-centering thrust block capable of withstanding high axial loads. The stator is immersed in **thermosetting insulating resin with high heat dissipation capacity** and encapsulated in an airtight AISI 304 stainless steel casing.

**40L** is a two-pole asynchronous motor with the parts in contact with water made of AISI 304L stainless steel. Cooling and lubrication of ball bearings is ensured by a special liquid approved for contact with food. The rewindable stator is housed in an AISI 304L stainless steel casing fixed with steel pins to the upper support of the motor. Equipped with a carbon-ceramic mechanical seal.

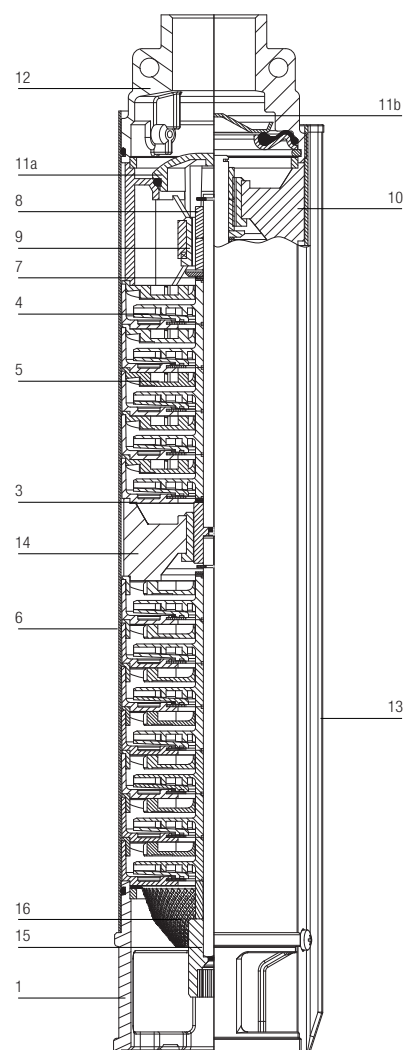
For both motors:

Removable cable connector, ACS, WRAS and KTW certified cable, motor suitable for use with inverters (30 Hz - 50 Hz). In the 50 Hz single-phase version, the capacitor and manually resettable overload protection are in the electrical control panel (to be ordered separately). In the three-phase version, the protection must be guaranteed by the user.

### MATERIALS

N°	PART*	MATERIALS	
1	LOWER SUPPORT	PRECISION CAST STEEL AISI 304	
2	SCREWS	STAINLESS STEEL AISI 304	
3	STAGE HOUSING	S4 1/13÷37 S4 2÷8/... UP TO 20 STAGES	TECHNOPOLYMER + STAINLESS STEEL WEAR RING
		S4 1/48 S4 2÷8/... ABOVE 20 STAGES S4 12/... S4 16/...	ACCIAIO INOSSIDABILE AISI 304
4	IMPELLER	TECHNOPOLYMER	
5	DIFFUSER	TECHNOPOLYMER	
6	OUTER SLEEVE	STAINLESS STEEL AISI 304	
7	THRUST BEARING	STAINLESS STEEL AISI 304	
8	SHAFT SLEEVE	STAINLESS STEEL AISI 304	
9	BUSH BEARING	RUBBER TPU	
10	UPPER SUPPORT	TECHNOPOLYMER	
11a	NON-RETURN VALVE	S4 1/13÷37 S4 2÷6/... UP TO 20 STAGES S4 8/5÷21 S4 12÷16/... UP TO 13 STAGES	TECHNOPOLYMER
11b		S4 1/48 S4 2÷6/... ABOVE 20 STAGES S4 8/27÷50 S4 12÷16/... ABOVE 13 STAGES	STAINLESS STEEL AISI 304 + RUBBER NBR
12	DELIVERY PORT	PRECISION CAST STEEL AISI 304	
13	CABLE SHEATH	STAINLESS STEEL AISI 304	
14	BOCCOLA GUIDA ALBERO INTERMEDIA	STAINLESS STEEL AISI 304	
15	INTERMEDIATE SHAFT SLEEVE	STAINLESS STEEL AISI 304	
16	FILTER	STAINLESS STEEL AISI 304	

\* In contact with the liquid.



### AVAILABLE AS STANDARD

Only pump body	Pump body with oil-filled motor	Pump body with water-filled motor
----------------	---------------------------------	-----------------------------------

Kit with pump body and motor, power supply cable, cord and control box.		
MODELS SUPPLIED WITH Power cable (and cord) 15 meters length	MODELS SUPPLIED WITH Power cable (and cord) 30 meters length	MODELS SUPPLIED WITH Power cable (and cord) 40 meters length
S4 1/13	S4 1/19	S4 1/37
S4 2/7	S4 1/26	S4 1/48
S4 2/10	S4 2/14	S4 2/20
S4 3/6	S4 3/13	S4 2/28
S4 3/9	S4 4/14	S4 2/40
S4 4/4	S4 6/14	S4 3/19
S4 4/7	S4 6/21	S4 3/25
S4 4/9	S4 8/15	S4 3/32
S4 6/5		S4 3/39
S4 6/7		S4 4/19
S4 8/5		S4 4/27
S4 6/10		
S4 8/7		
S4 8/9		
S4 12/6		
S4 12/9		
S4 12/13		
S4 16/8		
S4 16/12		

### – Denomination index: (example)

